



Corringham Court, Hampstead Garden Suburb, NW11

Share of freehold

£600,000



800 finchley road, hampstead garden suburb, london, nw11 7tj

telephone 020 8458 5000 facsimile 020 8209 2068

email sales@litchfields.com web litchfields.com

offices also in highgate

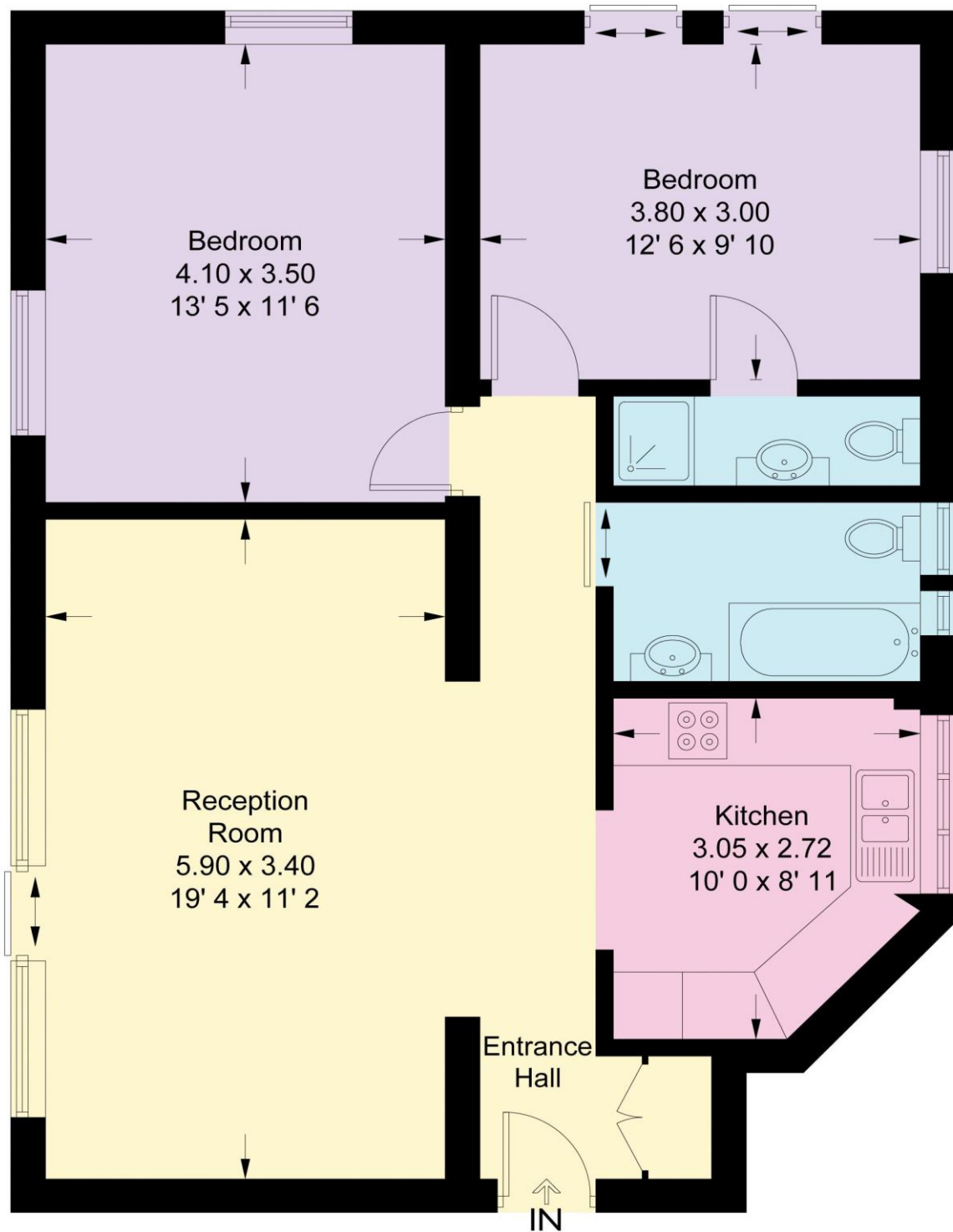
A bright and spacious ground floor flat set in this attractive purpose built block in the heart of Hampstead Garden Suburb. Positioned within a short walk (0.5 miles) to the multiple shopping and restaurant facilities of Golders Green (Northern Line) underground and bus station and a stones throw to the beautiful and open expanses of the Heath Extension. The property is well planned and is presented in very good decorative condition offering lovely and well maintained communal gardens and non-allocated residents off-street parking. Viewing of this fine property is recommended.

2 double bedrooms | Lounge/dining room | Kitchen | Family bathroom | En suite shower room | Extensive communal gardens | Non allocated residents parking | EPC=TBA



Corringham Court

Approximate Gross Internal Area = 799 sq ft / 74.2 sq m



Ground Floor

This plan is not to scale and must be used as layout guidance only. All measurements and areas are approximate and should not be relied upon to provide accurate information. This plan must not be relied upon when making property valuations, design considerations or any other such relevant decisions. We accept no responsibility or liability (whether in contract, tort or otherwise) in relation to any loss whatsoever arising from or in connection with any use of this plan or the adequacy, accuracy or completeness of it or any information within it.



Whilst every effort is made to ensure these details are accurate, all measurements given are approximate and for guidance only. We are unable to comment on the structure of the building or services and any investigations should be carried out by a qualified surveyor. We strongly advise you to ensure that all legal aspects are fully investigated by your solicitor prior to a purchase. We have not applied tests to any appliances or equipment and therefore cannot verify these are in good working order. We understand from the vendor that the fixtures and fittings listed are to be included in the sale price but these may be subject to negotiation.